



## Summer Newsletter



**724-852-5278**

[gccd@co.greene.pa.us](mailto:gccd@co.greene.pa.us)

[www.co.greene.pa.us/gccd](http://www.co.greene.pa.us/gccd)

22 West High Street, Suite 204

Waynesburg, PA 15370

# Board Members

## BOARD OF COMMISSIONERS

- Mike Belding, Chairman
- Betsy McClure, Vice Chairman
- Blair Zimmerman, Secretary

## BOARD OF DIRECTORS

- James Cowell, Jr., Chairman
- Commissioner Mike Belding, Vice Chairman
- Greg Hopkins, Treasurer
- William Wentzel, Secretary
- Glodenna Halstead, Director
- Dave Shipman, Director
- Melissa Adamson, Director

## ASSOCIATE DIRECTORS

- William Cree, Jr.
- Jerry Day
- Jim Willis
- Dominick Barbetta
- Rebecca Salosky
- Lance Kerr
- Joel Folman
- Carol Adamson
- Spencer Johnson
- Raymond Stockdale
- George Scull
- Keith Golden
- Mickey Lemley
- Charles Kubasic

## DISTRICT STAFF

- Lisa Snider, District Manager
- Lindsay Kozlowski, Asst. Mgr; Environmental Program Specialist
- Zachary Basinger, Environmental Program Specialist
- Benjamin Schweiger, Conservation Technician
- Sara Hlatky, Conservation Technician
- April Morris, Fiscal Officer
- Jared Zinn, Watershed Specialist

## COOPERATING AGENCIES

- Greene County Department of Economic Development  
Jeremy Kelly, Planning and Business Development Manager
- Natural Resources Conservation Service  
Phil Evans, District Conservationist
- PA DCNR Bureau of Forestry  
Russell Gibbs, Service Forester
- PA DEP Field Representative  
Dr. Will Brogan
- PA Fish and Boat Commission  
Eric Davis, SW Region Waterways Conservation Officer
- Penn State Cooperative Extension  
Tom Beresnyak, Area 6 Client Relations Manager
- Washington/Greene County Farm Service Agency  
Michal Roup, CED
- PA Game Commission  
Christopher Bence

## DISTRICT LOCATION

2nd Floor of the  
Ben Franklin Building at  
22 West High Street  
Suite 204  
Waynesburg, PA 15370  
Phone: 724-852-5278  
gccd@co.greene.pa.us  
Hours: 8:30 am to 4:30 pm Monday-Friday

*The GCCD Board meets monthly at 10:00 am in the  
Conservation District Conference Room 2nd Floor of the  
Ben Franklin Building at 22 West High Street.*



## Greene County Students Place in Pennsylvania Envirothon

Although all 2020 Envirothon Events had to be cancelled, students across the state had an opportunity to "take a natural challenge!" in the form of the "2020 Pennsylvania Envirothon Week."

Over 300 students from 100 schools in 47 counties participated in the event. Fifteen students from Carmichaels and Jefferson-Morgan High Schools took part in the event.

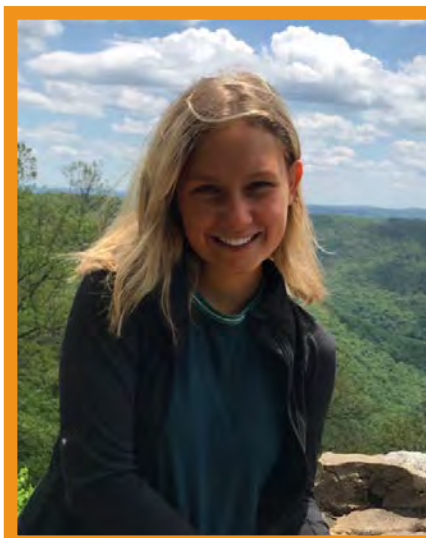
Christina Adams, of Carmichaels High School, came in tenth place overall with 425 points. Brooke Watters, also of Carmichaels High School, was right on her heels in thirteenth place overall with 420 points. Both had perfect scores on the Soils and Land Use Challenge, putting them in the top ten for those categories and winning them each a \$20 gift card from the Pennsylvania Envirothon.

Taylor Burnfield of Jefferson-Morgan High School really shone in the Current Issues Challenge, earning 90 points out of a possible 100 and making the top ten for the category and also winning a \$20 gift card from the Pennsylvania Envirothon.

We are thankful to the Pennsylvania Envirothon for taking the initiative to set up the event and are also appreciative to all of the partners that made it possible: Pennsylvania's Departments of Environmental Protection, Conservation and Natural Resources, Agriculture, and Education; U.S.D.A. Natural Resources Conservation Service; Fish & Boat Commission; and Game Commission. Event sponsors included: Pennsylvania Association of Conservation Districts, State Conservation Commission, Shell, PSECU, EQT Foundation, UGI Utilities, Weis, Chief Oil & Gas, PPL, and Pennsylvania Trappers Association.



*Christina Adams, of Carmichaels High School, came in tenth place overall with 425 points.*



*Brooke Watters, of Carmichaels High School, came in thirteenth place overall with 420 points.*



*Taylor Burnfield of Jefferson-Morgan High School, made the top ten in the Current Issues Challenge, earning 90 points out of a possible 100.]*

## Conservation District Announces Contest Winners

The Greene County Conservation District held a pair of contests as part of Conservation District Week. The first was a coloring contest open to pre-K students across Greene County. The second was a poster contest open to all Greene County students in Kindergarten through the eighth grade. Both contests highlighted the role of pollinators in our everyday lives by asking the question, “Where would we ‘BEE’ without pollinators?”

53 students participated this year by completing their submissions at home and sending photographs to the Conservation District. The Conservation District Board of Directors then voted to select winners.

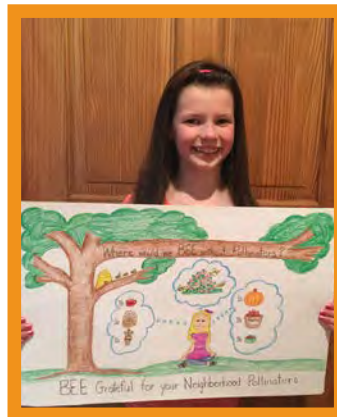
The winners of the coloring contest were Braelyn Abbadini, 4, Grant Patton, 4 and Evan Blackburn, 4. Each of the winners won a new bicycle and helmet.

The winners of the poster contest were as follows. In the K-1st grade category, Payton Joy Duncan in first place and Luke Patton in second place. In the 2nd -3rd category, Chloe B. Shaffer in first place. In the 7th -8th grade category Cheyenne DeBlasio in first place, Keisha McGowan in second place and Jaycea Melodia in third place. First place winners won \$100, second place winners won \$75 and third place winners won \$50.

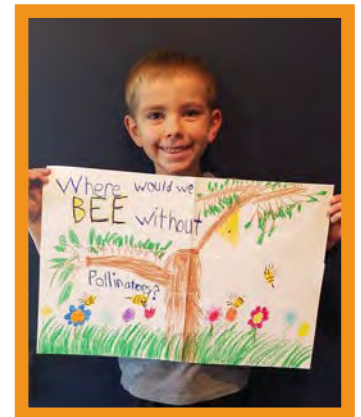
The first-place winner in each category of the poster contest will go on to a statewide contest held by the Pennsylvania Association of Conservation Districts. Congratulations to all winners and thank you to all participants.



Winners of the 2020 Coloring Contest; left to right Grant Patton, 4, Evan Blackburn, 4, and Braelyn Abbadini, 4.



Payton Joy Duncan, first place winner in the K-1st grade category.



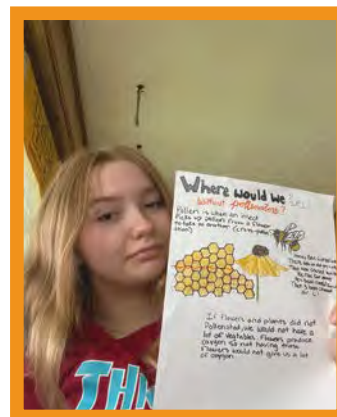
Luke Patton, second place winner in the K-1st grade category.



Chloe B Shaffer, first place winner in the 2nd-3rd grade category.



Cheyenne DeBlasio, first place winner in the 7th-8th grade category.



Keisha McGowan, second place winner in the 7th-8th grade category.



Jaycea Melodia, third place winner in the 7th-8th grade category.

## Blue Spruce Needlecast Disease

Written by: Bill Wentzel, Retired Forester

What is happening to many Colorado blue spruce in Greene County? Have you noticed that many of the trees are losing their needles and some have even died? The problem is a fungal disease called *Rhizosphaera* needlecast. It is a disease that affects mostly Colorado blue spruce. Infection typically begins in the lower branches of the tree, a damp area which favors fungal growth.

Infected needles first appear purple, then brown, and finally drop from the tree. Rain splashes the spores (sources of infection) onto healthy needles and helps the fungus spread to other parts of the tree. In a severely infected tree, branches will have new, green needles on their tips and purple, brown, or even no needles further back on the branch. The wet weather we've been experiencing in recent years has created conditions which enable the disease to thrive. I've not seen the blue spruce so badly affected in many a year.

While you can't reverse the damage from this disease, you can control its spread. Recommended management of *Rhizosphaera* needlecast consists of the following measures: (1) Mulch heavily under the tree, (2) Rake up and dispose of as many infected needles as possible to get rid of the source of the fungus disease, (3) Apply a fungicide containing chlorothalonil, and (4) water the tree during extended dry periods.

Colorado blue spruce is a beautiful tree in any setting. Be aware that it is not a native to this region of the country and, as such, is susceptible to several spruce diseases (*Rhizosphaera* needlecast and *Cytospora* spruce canker).

This tree species grows much better in places with cooler climates and moist, well-drained soils. The hot summer months combined with the heavy clay soils found in Greene County is a source of significant stress. And blue spruce trees under environmental stress tend to experience more serious disease problems.



*Rhizosphaera* needlecast affecting blue spruce. Image courtesy of USDA Forest Service - North Central Research Station Archive, USDA Forest Service, Bugwood.org.

## Announcement for Greene County Farmers

The Farm Service Agency recently announced a new program called Coronavirus Food Assistance Program which they will be using to offer financial assistance for farmers affected by the coronavirus pandemic and the price declines associated with the crisis. FSA will be accepting applications for farmers to receive this financial assistance until **August 28, 2020**. The following is a statement from the FSA announcement regarding who is eligible to apply for these funds: “Producers of agricultural commodities who have suffered a five-percent-or-greater price decline or who had losses due to market supply chain disruptions due to COVID-19 and face additional significant market costs. Eligible commodities include:

- **Non-specialty Crops:** malting barley, canola, corn, upland cotton, millet, oats, soybeans, sorghum, sunflowers, durum wheat, and hard red spring wheat
- **Wool**
- **Livestock:** cattle, hogs, and sheep (lambs and yearlings only)
- **Dairy**
- **Specialty Crops**
  - o **Fruits:** apples, avocados, blueberries, cantaloupe, grapefruit, kiwifruit, lemons, oranges, papaya, peaches, pears, raspberries, strawberries, tangerines, tomatoes, watermelons
  - o **Vegetables:** artichokes, asparagus, broccoli, cabbage, carrots, cauliflower, celery, sweet corn, cucumbers, eggplant, garlic, iceberg lettuce, romaine lettuce, dry onions, green onions, peppers, potatoes, rhubarb, spinach, squash, sweet potatoes, taro
  - o **Nuts:** almonds, pecans, walnuts
  - o **Other:** beans, mushrooms”

The best course of action to take is to call your local Farm Service Agency office, located in Washington, PA, at (724)-222-3060 to ask about applying for these funds and scheduling an appointment. You can also find more information about this program online by visiting <https://www.farmers.gov/cfap>. As always, if you have any additional questions or would like further assistance with this, you can contact Ben or Sara by phone at (724)-852-5278 or by email at [bschweiger@co.greene.pa.us](mailto:bschweiger@co.greene.pa.us) or [shlatky@co.greene.pa.us](mailto:shlatky@co.greene.pa.us).

WEDNESDAY, AUGUST 12, 2020  
GREENE COUNTY FAIRGROUNDS

**GREENE COUNTY  
JUNIOR LIVESTOCK  
SHOW & SALE**



*Follow Greene County Fair on Facebook.  
More information to come!*



## Greene County Girl Named 2020 Pennsylvania Runner-up Petite Miss Agriculture USA

Abigail Yenchik, a fifth-grade student from Greensboro, was recently named 2020 Pennsylvania Runner-up Petite Miss Agriculture USA. Miss Agriculture USA is a nonprofit organization that celebrates and promotes agriculture while helping young ladies build confidence, develop public speaking skills and become strong leaders. Miss Agriculture USA Queens throughout the country become “AGvocates for Agriculture.”

The Conservation District Board sponsored Abigail and the Pennsylvania competition at the silver level with a donation of \$250. We are very proud of Abigail, her accomplishments and her continued advocacy for agriculture in Greene County and now all of Pennsylvania.

## Purple Stripe Laws

### Important Changes for Hunters and Landowners in Pennsylvania

Governor Wolf signed Senate Bill 147 into law in 2019. This law authorized the Pennsylvania Game Commission to allow limited hunting on Sundays. The PGC has responded by approving three Sundays for hunting during the 2020 season.

- November 15 – Archery, Deer Season
- November 22 – Bear Hunting
- November 29 – Rifle, Deer Season

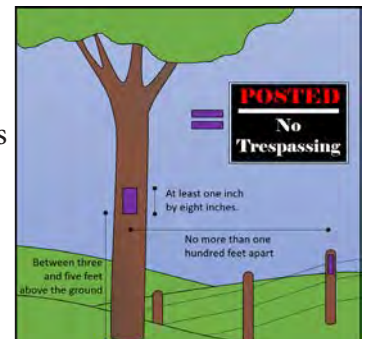
At the same time, this law strengthens trespass statutes related to hunting. Notably, hunters must obtain written permission from landowners prior to hunting on private lands during these Sunday hunts. Failure to obtain permission can result in criminal action and even the forfeiture of hunting privileges.

Governor Wolf also signed House Bill 1772 into law during 2019. This law makes it easier and less expensive for landowners to protect their property by using stripes of purple paint instead of more traditional, “No Trespassing” signs.

The law allows landowners in almost every county (except Allegheny and Philadelphia Counties) to paint purple stripes onto trees, fence posts or other structures as a signal that trespassing is not permitted. Under the law, these stripes will have the same legal weight as a posted “No Trespassing” sign.

Guidelines state that, “Vertical purple lines must be at least 8 inches long and 1 inch wide. The bottom of the mark must not be less than 3 feet or more than 5 feet from the ground. And painted marks must not be more than 100 feet apart.”

Taken together, these laws expand opportunities for hunters while simultaneously protecting the property rights of Pennsylvania Landowners. For more information about Sunday hunting, trespassing laws or purple stripe requirements, contact the Pennsylvania Game Commission Southwest Region Office at 724-238-9523 or visit their website at [www.pgc.pa.gov](http://www.pgc.pa.gov).



## There's still time to apply for the GRACE Program!

Greene County's Reinvestment in Agriculture: Cost-share Enhancement (GRACE) Program is a conservation-based program designed to enhance soil health within the agriculture community. The Conservation District Board of Directors are accepting GRACE applications until August 31st.

### What is needed to apply:

- Farm Map/Tract Number from FSA
- Farm Visit from GCCD
- Soil Test Kit from Penn State Extension if applying for lime or fertilizer (Conservation District staff will collect samples during farm visit)

### Eligible Practices:

- Fencing for pasture division, woodlot or stream exclusion. Boundary fencing is not eligible for reimbursement.
- Stabilized stream crossings for pasture access
- Lime application of up to 50 acres at a rate of up to 3 tons per acre based on soil test results.
- Fertilizer application of up to 20 acres based on soil test results (requires a minimum of 5.5 pH).
- Spring developments, troughs, cisterns, pumps and gutters to provide water for livestock and/or wildlife
- Forestry practices such as tree establishment and maintenance called for in a Forest Management Stewardship Plan, an American Tree Farm Plan or a CAP 106 plan.

For more information about the program, to get the most up-to-date cost share rates or to apply, call the District at 724-852-5278, e-mail [gccd@co.greene.pa.us](mailto:gccd@co.greene.pa.us). You can also visit the District during office hours at 22 West High Street, Suite 204, Waynesburg. Office hours are Monday-Friday from 8:30 a.m. to 4:30 p.m.

**All cost-share rates are reimbursements based on receipts.**

Funds for the program are a direct result of PA Act 13 that the district receives annually to foster conservation efforts within Greene County.



# USDA Reminds Producers to Complete Crop Acreage Reports



The Washington-Greene County office for USDA's Farm Service Agency (FSA) is currently open to phone and virtual appointments only but can still work with producers on timely filing crop acreage reports. FSA staff can provide assistance over the phone, by email and through virtual meetings via Microsoft Teams.

The following acreage reporting dates are applicable for Washington-Greene County:

June 15, 2020	Spring Barley, Spring Oats, Rye, Spring Wheat, Triticale
July 15, 2020	All other Crops, Perennial Forage, CRP
August 15, 2020	Beans, Cabbage, and Hemp

In order to comply with FSA program eligibility requirements, all producers must file an accurate crop acreage report by the applicable deadline. FSA staff is still able to assist producers in completing acreage reports, including providing maps.

The Washington-Greene County FSA office will provide maps to producers through mail with instructions for completing the maps. After planting is complete, producers should return completed maps and the acreage reporting sheet by mail by June 1 for small grain and July 1 for all other crops.

The Washington-Greene County FSA office is using Microsoft Teams software to virtually meet with producers to review maps and documents for certification. Producers who want to schedule a virtual appointment can download the Microsoft Teams app on their smart phones and call the FSA office for an appointment. You can also use Microsoft Teams from your personal computer without downloading software.

After completed maps and all acreage reporting information is received, FSA will make software updates and mail producers the completed Report of Acreage form (FSA-578) to sign. Producers must return the signed form certifying their acreage report to the FSA office through mail by June 15 for small grains and July 15 for all other crops.

The following exceptions apply to acreage reporting dates:

- If the crop has not been planted by the acreage reporting date, then the acreage must be reported no later than 15 calendar days after planting is completed.
- If a producer acquires additional acreage after the acreage reporting date, then the acreage must be reported no later than 30 calendar days after purchase or acquiring the lease. Appropriate documentation must be provided to the county office.

Producers should also report crop acreage they intended to plant, but due to natural disaster, were unable to plant. Prevented planting acreage must be reported on form CCC-576, Notice of Loss, no later than 15 calendar days after the final planting date as established by FSA and USDA's Risk Management Agency.

Noninsured Crop Disaster Assistance Program (NAP) policy holders should note that the acreage reporting date for NAP-covered crops is the earlier of the dates listed above or 15 calendar days before grazing or harvesting of the crop begins.

If you have applied for organic certification and do not receive it before the acreage reporting deadline, you may provide the necessary documentation to FSA immediately upon receipt from the certifying agent.

For questions, please contact FSA's Washington-Greene County office at 724-222-3060.

## Carmichaels Area Schools recognized for Excellence



Carmichaels Area Middle and Senior High Schools have been recognized by the Pennsylvania Association of Environmental Educators (PAEE) with the Meaningful Watershed Educational Experience School of Excellence Award. This award is “...(I)ntended to celebrate outstanding support of and/or implementation of the Meaningful Watershed Educational Experience (MWEE) in Pennsylvania” (PAEE 2020).

Now if you are not actively engaged as an educator or a conservationist, you may be scratching your head as to what a MWEE is. Simply put, a MWEE (pronounced Me-We) is an approach to environmental education that emphasizes learning by doing things. The idea is to immerse students in activities that not only teach them facts but also let them connect with the environment they are studying.

Teachers and administrators at Carmichaels schools are not just doing MWEE; they are doing them well. They have students from sixth through 12th grade actively taking part in field investigations related to environmental conservation. Activities like expert-led plant identification hikes engage students in ways that preserved specimens or pictures in a field guide cannot.

Their students are collecting data on vegetation, sampling aquatic macroinvertebrates with kick nets and studying fish populations with electrofishing. They are monitoring water chemistry, propagating native plant species in the school greenhouse and maintaining a nature trail on the school grounds.

Another component of MWEE is getting the students to actively participate in conservation rather than just learn about it. Carmichaels students have taken part in habitat restoration activities related to deer herbivory and invasive species on Ohio State Park’s Ferncliff Peninsula as well as their own nature trail.

Programs like this do not just happen, though. There are a lot of dedicated teachers working on these experiences; teachers like Kevin Willis, conservation biology teacher; Megan Patton, sixth grade science teacher; Justin Allen, eighth grade science teacher; and Ken Perkins, seventh grade science teacher. These teachers get a lot of support from their administrators; Fred Morecraft, superintendent; Lisa Zdravecky, high school principal; Ronald Gallagher, middle school principal.

Programs like these also take a lot of partners, to make these projects happen. Carmichaels works with California University of Pennsylvania, Ohio State Park, Chestnut Ridge Chapter of Trout Unlimited, and PA Fish and Boat Commission, and with funding from the Greene County Community Foundation EITC, Toyota Tapestry, Pennsylvania American Water, and Project Learning Tree.

The Conservation District is proud of the work that all of our County’s educators do to enrich the lives of Greene County’s young people and instill a stewardship ethic in our future leaders. This special recognition from the PAEE illustrates the commitment of Carmichaels Schools to this ideal.

PAEE 2020: (<http://www.paee.net/mwee-award-winners.html>)

## Grounded in Soil: Water Quality Benefits from Healthy Soils

Dr. Tyler A. Groh – Pennsylvania State University Extension

What does soil health have to do with water quality?

Soil, we all walk on it, but what is it? Commonly, soil is defined as a living (always changing) mixture of organic and mineral solid material, gases, and water. The ideal soil composition is 50% solids (organic and mineral) and 50% pore space that is filled with both gases and water. Soil is a medium in which life is sustained through plant growth, the recycling of matter and nutrients, and the purification and cycling of water. Soil can act as a sponge to purify water, and thus plays a role in water quality. However, soil is fragile and improper management can throw the ideal soil composition out of balance. This may happen over time in some agricultural fields, leading to a loss of nutrients and sediment. Thankfully, farmers are natural stewards of the land, and can implement conservation practices that shift soil composition back into an ideal proportion, making the soil healthy.



*Cover crops and perennial vegetation help protect soil from erosion, increase soil water infiltration, and decrease sediment and nutrient contributions to surface water bodies. (Photo: Tyler Groh, Penn State)*

Soil health is difficult to measure and describe, but attributes of a healthy soil include increased organic matter addition and accumulation, enhanced nutrient cycling with fewer nutrient losses from soil, increased soil microbial community function, formation of soil aggregates (larger pieces of soil) and large soil pores, and a decrease in compaction. These attributes are enhanced by some agricultural conservation practices including conservation tillage (reduced tillage or no-till), reducing soil compaction by minimizing passes over a field, extending rotations by growing a variety of crops, planting cover crops between growing seasons, and growing perennial vegetation. While sometimes difficult to implement, a combination of these conservation practices can help increase a soil's health.

So, what does soil health have to do with water quality? Well, when a soil is healthy, it is better able to act as a sponge, and absorb more water from precipitation events. Roots from cover crops and perennial plants, the absence of turning over topsoil with annual tillage, and the reduction of compaction all increases water infiltration into a soil by creating and protecting a network of soil pores. The greater the amount of water infiltrating into the soil, the less water available to run off a field. This translates to less sediment and nutrient export to stream(s). Infiltrated water can instead be used by plants in the field to grow or to recharge shallow groundwater. In larger precipitation events where soils cannot infiltrate all available water, cover crop roots anchor soil particles in place, preventing erosion when excess water runs off the field. Additionally, cover crops and perennial vegetation can take up nutrients in the field while they grow, reducing the total amount of nutrients exported to surface water bodies and increasing the amount of carbon (organic material) in a soil. Greater soil carbon then enhances nutrient cycling and removal within the soil by microbial processes and increases a soil's fertility. One example of the use of perennials in fields is through the installation of riparian buffers, which remove sediment and nutrients from agricultural water before entering a stream. Riparian buffers, in combination with the other conservation practices discussed here, show great promise for increasing water quality by protecting soil health.

Soil, we all walk on it, but let us not treat it like dirt. A healthy soil is what we need to help keep our water clean and our tables full of food. Whether you live on a city lot or farm hundreds of acres, helping keep soil covered by growing vegetation all year long can make a soil healthier. Soil is one of our most precious resources, and it has a vital role in our water cycle. We all have a part to play in enhancing soil health and water quality.

Visit Penn State Extension's website for more on soil health and how it benefits agricultural production.

This article is reprinted with permission from the author, Dr. Tyler A. Groh. Dr. Groh is an assistant research professor with Penn State University. It originally appeared on Penn State Extension's Watershed Winds Newsletter and may be accessed in its original form at the following location: [https://extension.psu.edu/grounded-in-soil-water-quality-benefits-from-healthy-soils?j=537064&sfmc\\_sub=35727366&l=159\\_HTML&u=10750674&mid=7234940&jb=12&utm\\_medium=email&utm\\_source=MarketingCloud&utm\\_campaign=WAQQ-2020-MAY-15-GN-EM-Watershed+Winds&utm\\_content=WAQQ-2020-MAY-15-GN-EM-Watershed+Winds&subcriberkey=0030W00003P1rYLQAZ](https://extension.psu.edu/grounded-in-soil-water-quality-benefits-from-healthy-soils?j=537064&sfmc_sub=35727366&l=159_HTML&u=10750674&mid=7234940&jb=12&utm_medium=email&utm_source=MarketingCloud&utm_campaign=WAQQ-2020-MAY-15-GN-EM-Watershed+Winds&utm_content=WAQQ-2020-MAY-15-GN-EM-Watershed+Winds&subcriberkey=0030W00003P1rYLQAZ)

# Republic Food Enterprises

## Bridging the Gap from Our Farm to Your Table



Republic Food Enterprise Center (RFEC), located in Republic, PA, serves as a comprehensive center for the development of sustainable food products across Western Pennsylvania. We work to bridge the gap from farm to table.

We respond to the nutritional needs of Western Pennsylvanians by stimulating agricultural production, producing value-added products, distributing local produce, and developing retail outlets within food deserts throughout the region.

RFEC is a social enterprise of Fayette County Community Action Agency and supported by the United States Department of Agriculture (USDA) and the Pennsylvania Department of Agriculture (PDA).

## Women's Leadership Conference

### Woman's Leadership Conference Rescheduled

In our last issue, we told you about the Woman's Leadership Conference being organized by the Greene County Woman's Farm Bureau. Unfortunately, the Novel Coronavirus has forced them to reschedule the event for next year. The conference has been rescheduled for early July of 2021. We will provide updates on this rescheduled event as more information becomes available.

## Poison Hemlock

### Poison Hemlock a Concern for Greene County Landowners

Poison Hemlock is an invasive plant that is becoming more common throughout Southwestern Pennsylvania. Not only does this invasive impact native biodiversity, it can pose a risk to people, pets and livestock. Contact with the plant can cause skin irritation for people and all parts of the plant are poisonous if ingested by people or animals.

Penn State Extension reports that the plant is commonly found growing along fencerows, pastures, roadsides and streamside areas. Poison Hemlock looks like wild carrot (Queen Anne's Lace) but can be readily identified by purple spots on stems and a musty odor. They recommend examining pastures and hay fields as the plant remains dangerous in harvested hay.

Eradicating Poison Hemlock can be accomplished by digging out individual plants or by herbicide application. More information may be found on the Penn State Extension website (<https://extension.psu.edu/poison-hemlock-identification>).

## Unintended consequences of the Novel Coronavirus Pandemic Response

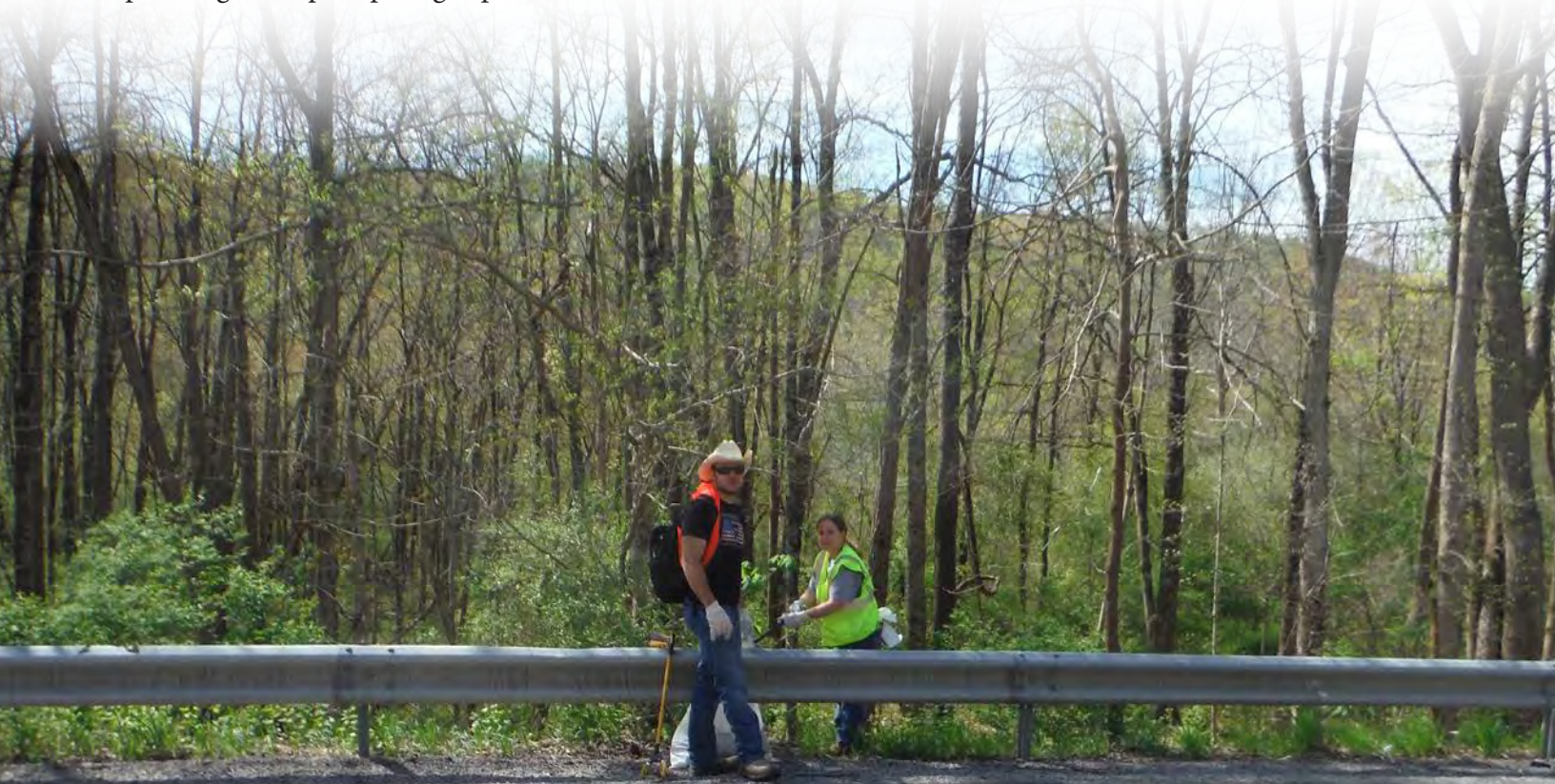
As more and more people have turned to outdoor recreation to cope with social distancing guidelines, our parks, state forests, game lands and other open spaces have seen unprecedented traffic. While people being active and engaging with the outdoors is something to celebrate, the fact that there has also been a marked increase in littering is not.

The PA Environmental Digest reports a marked increase in illegal dumping across the state. Public spaces have noted an increase in littering issues including discarded personal protective equipment (PPE), such as gloves and masks. Keep Pennsylvania Beautiful urges people to pack out everything they pack in as their litter can be a health hazard for people and wildlife and could even spread the virus. They caution individuals from picking up used wipes, gloves or other potentially contaminated PPE without litter collection devices or the ability to immediately wash and sanitize their hands.

On a larger scale, illegal dumping of household trash, tires, appliances, electronics, and construction waste have increased since April 1 when stay at home orders went into effect. It is possible that disruptions in trash hauling and recycling services due to the Coronavirus response have contributed to increases in illegal dumping. Nonetheless these illegal dump sites represent a danger to the environment and to people. It is therefore very important to get these sites reported and ultimately cleaned up.

Illegal dump sited can be reported to Keep Pennsylvania Beautiful which is a statewide nonprofit group focused on antilittering campaigns and trash cleanup efforts.

<https://illegaldumpfreepa.org/report-it/>



*Conservation District staff, Ben Schweiger and Lindsay Kozlowski collect trash during a roadside cleanup event.*

## Spotted Lanternfly “Spotted” in Western PA

The Conservation District has reported on the Spotted Lanternfly in the past and has asked Greene County Landowners to be aware that it could move into our region. Now that it is in our region, we are again asking landowners to be vigilant as identifying this invader early is critical in slowing its spread and ultimately controlling it. We are including a Checklist for Residents developed by the PA Department of Agriculture in this issue of the newsletter. We ask that everyone look at it and do what they can to help.

The Spotted lanternfly is an exotic plant pest that has been declared a public nuisance. The insect is a danger to forests, homes, landscaping and ornamental trees, as well as orchards, vineyards, and other agriculture. A quarantine order was implemented in Pennsylvania and other states to provide control and eradication of the Spotted Lanternfly. The original quarantine order included 13 Eastern-Pennsylvania counties.

As of March 2020, The Pennsylvania Department of Agriculture has expanded the Spotted lanternfly quarantine order to include 26 counties including Allegheny and Beaver Counties here in Western Pennsylvania as some municipalities within these counties have a known infestation.

The expansion of the quarantine means that businesses doing business within these counties will be required to obtain a free permit from the PA Department of Agriculture and provide training on spotting and killing Spotted Lanternfly to their employees.

Information on the permit and how to obtain it may be found on the PA Department of Agriculture’s website ([https://www.agriculture.pa.gov/Plants\\_Land\\_Water/PlantIndustry/Entomology/spotted\\_lanternfly/Pages/Quarantine-and-Permit-Program-FAQs.aspx](https://www.agriculture.pa.gov/Plants_Land_Water/PlantIndustry/Entomology/spotted_lanternfly/Pages/Quarantine-and-Permit-Program-FAQs.aspx)).

Penn State University Extension is offering training for business owners and their employees in support of this permit.

For Business Owners - <https://extension.psu.edu/spotted-lanternfly-permit-training>

For Employees - <https://extension.psu.edu/spotted-lanternfly-permit-training-powerpoint-slides>

If you need more information about the quarantine or the permit, you can contact the PA Department of Agriculture regional office:

Pennsylvania Department of Agriculture - Region 4

226 Donohoe Road

Greensburg, Pennsylvania 15601

Phone: (724) 832-1073

Fax: (724) 832-1013

### SPOTTED LANTERNFLY Checklist for Residents

**Help keep spotted lanternfly from spreading.** Before you travel or move any items stored outdoors within or out of the quarantine area, check for and remove all stages of spotted lanternfly. Use the guide below to know which items to check.

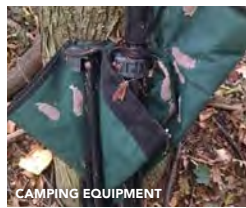
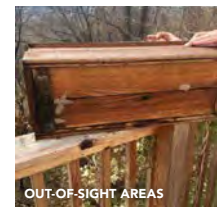
#### LIFE STAGES



Images by PA Department of Agriculture

#### POTENTIAL EGG MASS LOCATIONS

Spotted lanternfly egg masses can be laid on any surface and need a careful eye for inspection! Below are some examples of egg masses on outdoor objects.





# DO YOUR PART TO HELP STOP THIS INVADER!

**Look before you leave!** Please confirm that you have inspected any of these items and related objects that appear on the list below before traveling or transporting them from the quarantine area (check all that apply).

<input type="checkbox"/> <b>Vehicle</b> – Bumpers and wheel wells – Under and inside vehicle – Windshield wiper area	– Playhouses – Sandboxes – Yard games – Other _____	<input type="checkbox"/> <b>Building Materials</b> – Bricks/cinder blocks – Cement mixing tubs – Lumber – Pipes – Roofing materials – Skid steers/forklifts – Tools and toolboxes – Workbenches – Other _____	– Storage sheds – Tractors and trailers – Trees, shrubs, and plants – Yard decorations – Other _____
<input type="checkbox"/> <b>Recreational or Camping Items</b> – Backpacks – Bicycles – Boats/boat trailers – Campers – Ice chests – Motor homes – Motorcycles – Recreational vehicles – Snowmobiles – Sports equipment – Tarps – Tents – Other _____	<input type="checkbox"/> <b>Outdoor Household Items</b> – Barrels – Cardboard or wooden boxes – Firewood – Outdoor furniture/lights – Outdoor poles – Plant containers – Propane or oil tanks – Refrigerators/freezers – Shutters – Storage sheds – Storm/screen doors and windows – Trash cans – Window awnings – Other _____	<input type="checkbox"/> <b>Yard and Garden Items</b> – Backhoes – Barbecue grills – Carts – Cold frames – Dog houses, rabbit sheds, chicken coops, etc. – Fencing – Garden tillers – Garden tools – Lawnmowers – Sign and posts	<p>Check yourself before getting into any vehicle to make sure there are no spotted lanternfly nymphs or adults on you.</p> <p>If you find any life stage of spotted lanternfly, destroy them immediately. For egg masses, be sure you crush all eggs evenly. Alternatively, all life stages of spotted lanternfly can be placed permanently in a container with rubbing alcohol or hand sanitizer to destroy them.</p>

*By signing this checklist, I am confirming that I have inspected my vehicle and those items I am moving from the spotted lanternfly quarantine area, and I do not see any spotted lanternfly egg masses or other life stages in or on anything I am moving.*

SIGNATURE

DATE

ADDRESS

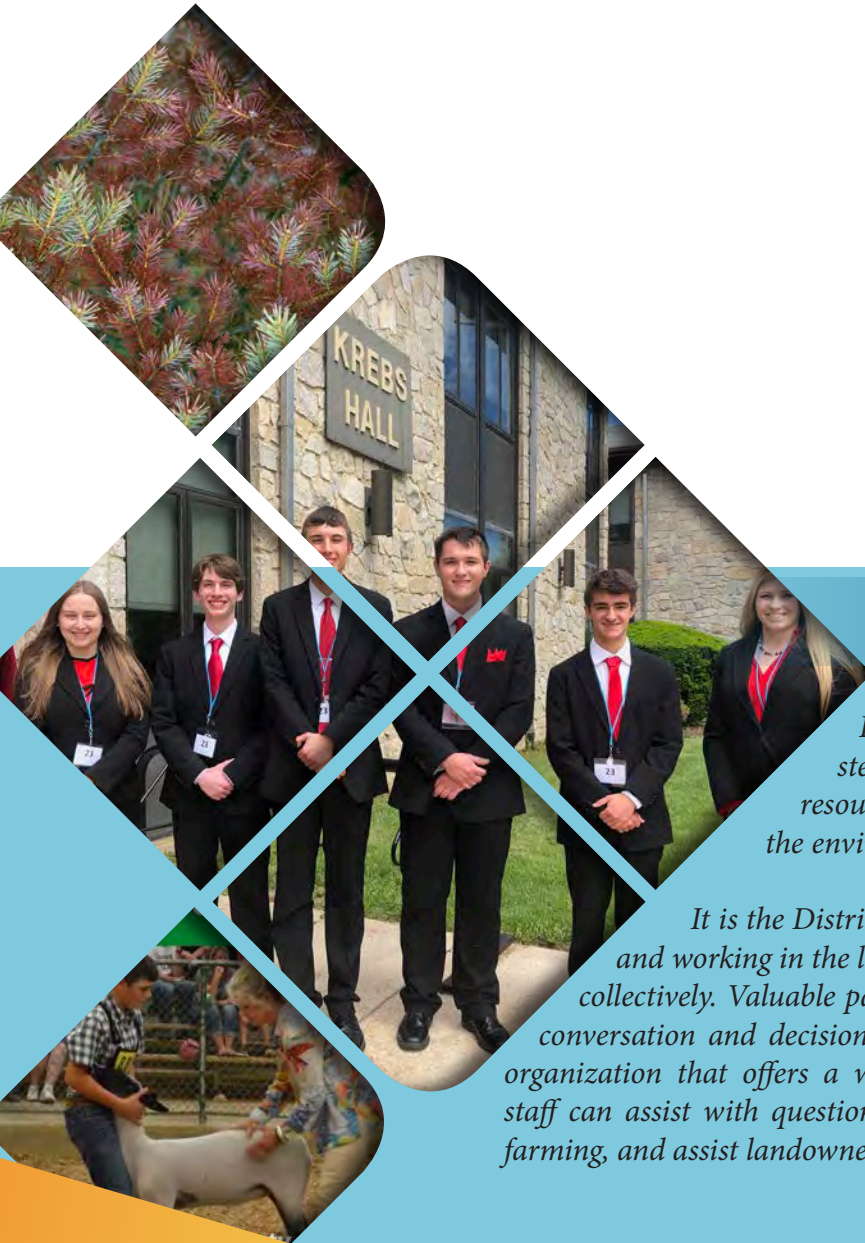
Please sign, date, and keep this checklist in your vehicle, and use it each time you need it. For more information and to see the latest map of quarantined counties, visit [agriculture.pa.gov/spottedlanternfly](http://agriculture.pa.gov/spottedlanternfly).

EE0356 50M02/20mpc



22 West High Street  
Suite 204  
Waynesburg, PA 15370

Presorted  
Standard  
U.S. Postage  
PAID  
Morgantown, WV  
Permit No.108



## Our Mission

*It is the mission of the District to commit to protection, stewardship, and conservation of the County's natural resources to ensure a wise balance between the protection of the environment and the benefit of the landowners of the County.*

*It is the District's belief that conservation works best when people living and working in the local area work together to manage their natural resources collectively. Valuable partnerships are formed when diversity is brought into the conversation and decision-making process. Our office is a conservation-oriented organization that offers a wide variety of expertise and knowledge. The District staff can assist with questions related to permitting, offer guidance on planning for farming, and assist landowners with various natural resource related topics.*